



datavideo

PRODUCT GUIDE

2023

CONTENTS

6	PTZ CAMERAS	13	CAMERA CONTROL	22	ICAST	36	STREAMING PLATFORM
NEW	PTC-305		RMC-300A	NEW	iCAST 10NDI		dvCloud
NEW	PTC-305T		RMC-180 MARK II	NEW	iCAST mini		BB-1 Kit
NEW	PTC-305NDI						
	PTC-300	14	HDBASET	24	DIGITAL VIDEO SWITCHERS	38	ENCODERS
	PTC-300NDI	NEW	HBT-50	NEW	SHOWCAST 100		NVS-40
NEW	PTC-285	NEW	HBT-30	NEW	SE-4000	NEW	NVS-36
NEW	PTC-285T	NEW	HBT-16		SE-3200		NVS-35
NEW	PTC-285NDI	NEW	HBT-15		SE-1200MU		NVS-33
	PTC-280	NEW	HBT-12		RMC-260		
	PTC-280NDI		HBT-11		SE-650	39	DECODERS
	PTC-150		HBT-6		SE-500HD	NEW	NVD-40
	PTC-150T		HBT-5				NVD-35 MARK II
NEW	PTC-145			28	DIGITAL VIDEO SWITCHERS		NVD-30 MARK II
NEW	PTC-145T	18	ROBOTIC PAN TILT HEAD		ACCESSORIES		
NEW	PTC-145NDI	NEW	PTR-15/ 15T		TPC-700	40	RECORDERS
	PTC-140		PTR-10/ 10T MARK II		TPC-700P		HDR-90
	PTC-140T	NEW	ZEK-2			NEW	HDR-80
	PTC-140NDI		PCB-1	30	MOBILE VIDEO STUDIOS		HDR-2
			WM-11		MS-2850		RP-79
			CM-10				
10	BLOCK CAMERAS	20	HAND CARRY PORTABLE	32	REPLAY SYSTEM	42	MONITORS
	BC-80		STUDIOS	NEW	RPL-100	NEW	TLM-170K/KM/KR
	BC-50	NEW	HS-4000			NEW	TLM-170F/FM/FR
NEW	BC-15P		HS-3200	34	4K MULTICAMERA		TLM-170V/VM/VR
NEW	BC-15PN		HS-2200		PROCESSORS		TLM-700UHD
NEW	BC-15C		HS-1600T MARK II	NEW	KMU-300		TLM-102
NEW	BC-15CN		HS-1300		KMU-100		
					RMC-185		
12	CAMERA ACCESSORIES						
	WM-1						

<p>44 AV CONVERTERS DAC-70 DAC-60 DAC-50S DAC-45 NEW DAC-9P 4K DAC-9P NEW DAC-8P 4K DAC-8PA</p> <p>48 CONVERTER ACCESSORIES RMK-2</p> <p>49 DISTRIBUTION AMPLIFIERS VP-840 VP-597 VP-901</p> <p>50 UVC INTERFACE CAP-1 CAP-2</p> <p>51 REPEATERS VP-929 VP-737 VP-634 VP-633</p>	<p>52 INTERCOM ITC-300 ITC-100</p> <p>53 INTERCOM ACCESSORIES ITC-300SL ITC-100SL TD-3 VR-300R TB-5 HP-1 HP-2 HP-2A CB-3 CB-4 CB-68</p> <p>54 VIRTUAL STUDIO SYSTEMS TVS-3000 TVS-2000A TVS-1000A</p> <p>56 CHROMAKEYER DVK-400</p>	<p>57 CHROMAKEYER ACCESSORIES MAT-2 MAT-5 MAT-7 TA-1 TA-2 TA-3</p> <p>58 AUDIO MIXING AND MANAGEMENT DAC-80 DAC-90 DAC-91 AD-10 AD-200 AD-300 AM-100</p> <p>62 TELEPROMPTERS NEW TP-900 NEW TP-800 NEW TP-700 TP-650 TP-500 TP-300 NEW TTL-100 NEW FS-30 WR-500</p>	<p>66 HARD CASES HC-600 HC-700 HC-800 NEW HC-800FS</p> <p>68 CHARACTER GENERATORS TC-200</p> <p>70 POWER DISTRIBUTION PD-6A PD-4A PD-2A DDC-4012H</p> <p>72 ALL IN ONE CABLES CB-22H CB-23H CB-24 CB-30 CB-31 CB-46 CB-47 CB-61 CB-62</p>
---	--	---	--

3 YEAR WARRANTY



One of the core values of Datavideo is service. To make sure that every user of Datavideo equipment has a trustworthy experience we do our utmost best, day after day, year after year. We are confident that our products give you reliable service and we seal that confidence by a one year warranty period.

On most products, it's possible to extend that warranty for extra two years after registering. Please make sure to register your Datavideo product directly after purchasing for a 3-year warranty.

Why Datavideo?

Datavideo is a global manufacturer of live video equipment for the broadcast and professional AV markets. What sets Datavideo apart from other video equipment manufacturer is that we specialize in end to end video production solutions for various vertical markets ranging from broadcast to worship to education, as well as, corporate and social media.

You will see in this product guide a wide range of products we offer for your live video production needs. Whether you are a novice video producer, who is learning live video production, or who's starting to learn about live production or a seasoned video professional, we have something you need in our product line.

We pride ourselves in making products that are high quality, but easy to use. It's a family of products that are designed to work together so that you never have to worry about the compatibility of your products. Our customers purchase our equipment with confidence in knowing that they are a solution to their video production needs.



PTC-305
20x 4K Tracking Camera

- Supports up to 2160p50/60 via HDMI
- 20x Optical Zoom, 16x Digital zoom
- 1/1.8" CMOS
- Built-in H.264/H.265 dual streaming encoder
- Auto tracking object supported
- External audio input: 3.5mm mic in or line in
- Compatible with various controllers: Datavideo PTZ View Assist APP, RMC-300 and RMC-180 series.



PTC-305T
20x 4K HDBaseT Tracking Camera

- Supports up to 2160p50/60 via HDMI
- 20x Optical Zoom, 16x Digital zoom
- 1/1.8" CMOS
- Built-in H.264/H.265 dual streaming encoder
- HDBaseT technology
- Auto tracking object supported
- External audio input: 3.5mm mic in or line in
- Compatible with various controllers: Datavideo PTZ View Assist APP, RMC-300 and RMC-180 series.



PTC-305NDI
20x NDI Tracking 4K Camera

- Supports up to 2160p50/60 via HDMI
- 20x Optical Zoom, 16x Digital Zoom
- 1/1.8" CMOS
- Built-in H.264/H.265 dual streaming encoder
- Auto tracking object supported
- External audio input: 3.5mm mic in or line in
- Compatible with various controllers: Datavideo PTZ View Assist APP, RMC-300 and RMC-180 series.
- NDI technology

PTZ CAMERAS

Complete Range of Pan-Tilt-Zoom Cameras



PTC-300
20x 4K Camera

- Supports up to 2160p50/60 via HDMI
- 20x Optical Zoom, 16x Digital Zoom
- 1/1.8" CMOS
- Built-in H.264/H.265 dual streaming encoder
- 2160p and 1080p(3G-SDI) simultaneous video output
- External audio input: 3.5mm mic in or line in
- Compatible with various controllers: Datavideo PTZ View Assist APP, RMC-300 and RMC-180 series.



NDI®|HX



PTC-300NDI
20x NDI 4K Camera

- Supports up to 2160p50/60 via HDMI
- 20x Optical Zoom, 16x Digital Zoom
- 1/1.8" CMOS
- Built-in H.264/H.265 dual streaming encoder
- 2160p and 1080p(3G-SDI) simultaneous video output
- External audio input: 3.5mm mic in or line in
- Compatible with various controllers: Datavideo PTZ View Assist APP, RMC-300 and RMC-180 series.
- NDI technology



PTC-285
12x 4K Tracking Camera

- Supports up to 2160p50/60 via HDMI 4:2:2 YUV output
- 12x Optical Zoom, 16x Digital Zoom
- 1/2.8" CMOS
- Auto tracking object supported
- Built-in H.264/H.265 dual streaming encoder
- External audio input: 3.5mm mic in or line in
- Compatible with various controllers: Datavideo PTZ View Assist APP, RMC-300 and RMC-180 series.



HDBaseT



PTC-285T
12x 4K HDBaseT Tracking Camera

- Supports up to 2160p50/60 via HDMI 4:2:2 YUV output
- 12x Optical Zoom, 16x Digital Zoom
- 1/2.8" CMOS
- Auto tracking object supported
- HDBaseT technology
- Built-in H.264/H.265 dual streaming encoder
- External audio input: 3.5mm mic in or line in
- Compatible with various controllers: Datavideo PTZ View Assist, RMC-300 and RMC-180 series.



NDI®|HX3



PTC-285NDI
12x NDI 4K Tracking Camera

- Supports up to 2160p50/60 via HDMI 4:2:2 YUV output
- 12x Optical Zoom, 16x Digital Zoom
- 1/2.8" CMOS
- Auto tracking object supported
- Built-in H.264/H.265 dual streaming encoder
- External audio input: 3.5mm mic in or line in
- Compatible with various controllers: Datavideo PTZ View Assist APP, RMC-300 and RMC-180 series.
- NDI technology

PTZ CAMERAS

Complete Range of Pan-Tilt-Zoom Cameras



PTC-280
12x 4K Camera

- Supports up to 2160p50/60 via HDMI
- 12x Optical Zoom, 16x Digital Zoom
- 1/2.5" CMOS
- Built-in H.264/H.265 dual streaming encoder
- 2160p and 1080p(3G-SDI) simultaneous video output
- External audio input: 3.5mm mic in or line in
- Compatible with various controllers: Datavideo PTZ View Assist APP, RMC-300 and RMC-180 series.



NDI|HX



PTC-280NDI
12x NDI 4K Camera

- Supports up to 2160p50/60 via HDMI
- 12x Optical Zoom, 16x Digital Zoom
- 1/2.5" CMOS
- Built-in H.264/H.265 dual streaming encoder
- 2160p and 1080p(3G-SDI) simultaneous video output
- External audio input: 3.5mm mic in or line in
- Compatible with various controllers: Datavideo PTZ View Assist APP, RMC-300 and RMC-180 series.
- NDI technology



PTC-150
30x 1080P Camera

- 1/2.8 inch CMOS sensor.
- 1920x1080px Full HD resolution, 50/60p
- 30x Optical Zoom
- 1x 3G-SDI, 1x HDMI, 1x CVBS video output from camera
- Compatible with various controllers: RMC-300 and RMC-180 series.

HDBaseT



PTC-150T
30x 1080P HDBaseT Camera

- 1/2.8 inch CMOS sensor.
- 1920x1080px Full HD resolution, 50/60p
- HDBaseT technology
- 30x Optical Zoom
- 1x 3G-SDI, 1x HDMI, 1x CVBS video output from camera
- Compatible with various controllers: Datavideo HS-1600T, RMC-300 and RMC-180 series.



PTC-145
20x HD Tracking PTZ Camera

- 1/2.8 inch CMOS sensor.
- 1920x1080px Full HD resolution, 60fps
- 20x Optical Zoom, 8x Digital Zoom
- SDI/HDMI output H.264/H.265 streaming encoder
- Auto tracking object supported
- External audio input: 3.5mm audio or line in
- Advanced 2D/3D noise reduction technology
- Compatible with various controllers: Datavideo PTZ View Assist APP, RMC-300 and RMC-180 series.

PTZ CAMERAS

Complete Range of Pan-Tilt-Zoom Cameras

AT HDBaseT



PTC-145T
20x 1080P Camera

- 1/2.8 inch CMOS sensor.
- 1920x1080px Full HD resolution, 60fps
- 20x Optical Zoom, 8x Digital Zoom
- SDI/HDMI output H.264/H.265 streaming encoder
- HDBaseT technology
- Auto tracking object supported
- External audio input: 3.5mm mic in or line in
- Advanced 3D noise reduction technology
- Compatible with various controllers: Datavideo HS-1600T, RMC-300 and RMC-180 series.

AT NDI|HX3



PTC-145NDI
20x 1080P Tracking Camera

- 1/2.8 inch CMOS sensor.
- 1920x1080px Full HD resolution, 60fps
- 20x Optical Zoom, 8x Digital Zoom
- SDI/HDMI output H.264/H.265 streaming encoder
- Auto tracking object supported
- External audio input: 3.5mm mic in or line in
- Advanced 3D noise reduction technology
- Compatible with various controllers: Datavideo PTZ View Assist APP, RMC-300 and RMC-180 series.
- NDI technology

HDBaseT



PTC-140
20x 1080P Camera

- 1/2.8 inch CMOS sensor.
- 1920x1080px Full HD resolution, 60fps
- 20x Optical Zoom, 10x Digital Zoom
- SDI/HDMI output
- H.264/H.265 streaming encoder
- Advanced 2D/3D noise reduction technology
- Compatible with various controllers: Datavideo PTZ View Assist APP, RMC-300 and RMC-180 series.

NDI|HX



PTC-140NDI
20x NDI PTZ Camera

- 1/2.8 inch CMOS sensor.
- 1920x1080px Full HD resolution, 60fps
- 20x Optical Zoom, 10x Digital Zoom
- HDBaseT technology
- HDMI output
- H.264/H.265 streaming encoder
- Advanced 2D/3D noise reduction technology
- Compatible with various controllers: Datavideo HS-1600T, RMC-300 and RMC-180 series.
- 1/2.8 inch CMOS sensor.
- 1920x1080px Full HD resolution, 60fps
- 20x Optical Zoom, 10x Digital Zoom
- NDI technology
- SDI/HDMI output
- H.264/H.265 streaming encoder
- Advanced 2D/3D noise reduction technology
- Compatible with various controllers: Datavideo PTZ View Assist APP, RMC-300 and RMC-180 series.



BC-80
30x 1080P Camera



BC-50
20x 1080P Camera with
Streaming Encoder

- 1/2.8 inch CMOS sensor. 1080p HD resolution
 - 30x optical zoom
 - Digital Noise Reduction Function (DNR)
 - 1x 3G-SDI, 1x HDMI video output
 - Controllable by VISCA/DVIP
- 1/2.7 inch CMOS sensor. 1080p Full HD resolution
 - 20x optical zoom, 16x digital zoom
 - 3G-SDI output
 - H.264/H.265/Motion-JPEG compression and IP streaming through RJ-45 connection
 - Web Interface

BLOCK CAMERAS

State Of The Art Cameras



BC-15P
4K POV Camera

- 1/2.3" CMOS sensor with 4K 50/60p output, perfect for low light environment video production
- H.264/265 streaming encoder built-in
- Streaming videos in RTMP(S) and SRT
- support Datavideo dvCloud
- App control and live Preview
- Power over Ethernet supported
- Small box design makes it flexible to be mounted anywhere.
- Swappable Fixed Lens Built-in
- Support two types of controls: physical buttons, and APP



NDI@|HX



BC-15PN
4K POV NDI Camera

- 1/2.3" CMOS sensor with 4K 50/60p output, perfect for low light environment video production
- H.264/265 streaming encoder built-in
- Streaming videos in RTMP(S) and SRT
- support Datavideo dvCloud
- App control and live Preview
- Power over Ethernet supported
- Small box design makes it flexible to be mounted anywhere.
- Swappable Fixed Lens Built-in
- Support two types of controls: physical buttons, and APP
- NDI technology



BC-15C
4K CS Mount POV Camera

- 1/2.3" CMOS sensor with 4K 50/60p output, perfect for low light environment video production
- H.264/265 streaming encoder built-in
- Streaming videos in RTMP(S) and SRT
- support Datavideo dvCloud
- App control and live Preview
- Power over Ethernet supported
- Standard CS mount interchangeable lens design
- Supports DC-IRIS function
- Small box design makes it flexible to be mounted anywhere.
- Support two types of controls: physical buttons, and APP



NDI@|HX

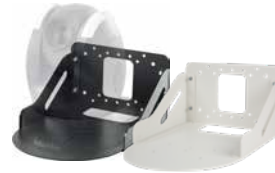


BC-15CN
4K CS Mount POV NDI Camera

- 1/2.3" CMOS sensor with 4K 50/60p output, perfect for low light environment video production
- H.264/265 streaming encoder built-in
- Streaming videos in RTMP(S) and SRT
- Support Datavideo dvCloud
- App control and live Preview
- Power over Ethernet supported
- Standard CS mount interchangeable lens design
- Supports DC-IRIS function
- Small box design makes it flexible to be mounted anywhere.
- Support two types of controls: physical buttons, and APP
- NDI technology



PTZ CAMERA ACCESSORIES



WM-1

Wall Mount for PTC Camera

- Can be positioned upside-down or rightside-up
- Made of steel for durability and endurance
- Compatible with all PTZ Cameras
- White color is also available

CAMERA CONTROL

Ultimate Control From A Distance



RMC-300A

Universal Remote Control Panel

- Control up to 24 PTR Robotic Pan Tilt Head, PTZ and block cameras by DVIP or up to 8 cameras by serial RS-422 transmission
- User friendly interface on 5-inch LCD touch panel
- Zoom knob and lock button for better camera control
- LCD displays GUI for Operability and Visibility



RMC-180 MARK II

PTZ Camera Controller

- Remote control up to 4 Datavideo PTC/BC/PTR series cameras
- Control of Pan, Tilt and Zoom as well as Iris, Focus, Gain, and other functions
- Control via CAT5/CAT6 cable with RJ45 connectors
- Support shortcut keys for up to 4 position presets for each of your cameras



HDBaseT

Make It Single Wire



HBT-50
HDBaseT Receiver Box

- Supply power, video signal, and camera control up to 4 devices up to 100 meters distance.
- Support simultaneously outputs HDMI, SDI, RS-422 and IP control signals.
- HBT-50 simultaneously transmits SDI (up to 1080p60) and HDMI (up to 1080p60) as well as camera control.
- Single cable video transmission by HDBaseT technology



HBT-30
HDBaseT Receiver Box

- Support up to Ultra HD 4K50/60 video formats
- Single cable video transmission by HDBaseT technology
- Long distance transmission up to 100m at 4K50/60 using Cat 6a cable
- Power to 3 cameras by PoE technology
- Supports DVIP/RS-422/232 remote control protocol
- 3 HDMI 2.0 Video outputs
- Supports HDMI Deep Color & full 3D & 4K50/60



HBT-16
HDBaseT Receiver Box

- Extend 4K50/59.94/60 video transmission up to 100m from HBT-15 Transmitter Box.
- Transmit video, audio, DVIP Ethernet control, RS-422/232 and PoE by a single Cat. 6A cable
- PoE Power supply 56V input from HBT-16 Receiver side.
- Supports DVIP Control Protocol
- Supports RS-422/232 Control



HBT-15
HDBaseT Transmitter Box

- Extend 4K50/59.94/60 video transmission up to 100m from HBT-15 Transmitter Box to HBT-16 Receiver Box.
- Transmit video, audio, DVIP Ethernet control, RS-422/232 and PoE by a single Cat. 6A cable
- 12V 30W DC output at HBT-15 Transmitter Box side.
- Supports DVIP Control Protocol



HDBaseT

Make It Single Wire



HBT-12
HDBaseT Receiver Box

- Support upto 4K 25/30p
- Support 60W POE
- Long distance 4K solution
- Carry everything in one ethernet cable
- Selectable control protocol: RS-232, RS-422 and DVIP



HBT-11
HDBaseT Receiver Box

- Extend 4K video transmission up to 70m
- Extend Full HD video transmission up to 100m
- Receive video, audio, DVIP
- Ethernet control, RS-422/232 and POE from a single Cat.5e/6/6a/7 cable
- Supports HDMI as signal output



HBT-6
HDBaseT Receiver Box

- Supports up to 4K 25/30p with embedded multi-channel audio
- Transmit up to 60m at 1080p or 35m at 4K
- Supports HDMI Deep Color & full 3D & 4K@30
- Supports control over RS-232/RS-422
- Supports default EDID and EDID learning from the display
- HDCP Compliant



HBT-5
HDBaseT Transmitter Box

- Supports up to 4K 25/30p with embedded multi-channel audio
- Transmit up to 60m at 1080p or 35m at 4K
- Supports HDMI Deep Color & full 3D & 4K@30
- Supports control over RS-232/RS-422
- Supports default EDID and EDID learning from the display
- HDCP Compliant



4K
ULTRA HD



NEW

PTR-15/15T
4K Robotic Pan
Tilt Head

- Various interfaces: SDI, HDMI, RS-232, RS-422, DVIP/HDBaseT, Tally, LANC
- 12G-SDI and HDMI2.0 supported
- Timecode/Genlock interface built-in
- Multiple choices of controllers: RMC-180 MARK II, RMC-300A
- Tally light built-in
- D-tap connector for DC output
- Selectable DC voltage output for different cameras
- Support optional Datavideo ZEK-1 Zoom Encoder Kit, and ZEK-2 to detect and read out the Zoom position of cameras on top
- Control Sony, Panasonic, Canon, JVC cameras
- Support HDBaseT technology (PTR-15T)

ROBOTIC PAN TILT HEAD

Turn Your Camera Into a Robotic



PTR-10/10T MARK II
Robotic Pan
Tilt Head

- Turn camcorder into PTZ
- Multiple signal interface: SDI, HDMI, RS-232, RS-422, DVIP/ HDBaseT, Tally, LANC
- Diversified controller options: RMC-180, RMC-300, and HS-1600T series
- Control of Pan, Tilt, Zoom
- Support optional Datavideo ZEK-1 Zoom Encoder Kit, and ZEK-2 to detect and read out the Zoom position of cameras on top
- Max. Camera Weight 4kg
- Support HDBaseT technology (PTR-10T MARK II)



ZEK-2
Zoom Control Kit for Tilta
Nucleus-M Motor

- Active Zoom Driver Kit
- Motorized external Zoom control
- Pre-store and Re-call preset positions for Pan/Tilt/Zoom
- Special design for lumix BGH-1 with M4/3 manual Zoom lenses
- Convert the manual Zoom camera into a Robotic Pan Tilt Zoom remote control camera



PCB-1
Camera Control Box

- Support to control Panasonic 2-ports remote cameras
- Compatible with RMC-180 MARK II, RMC-300A and IR remote control, can control Zoom, Focus, IRIS of Panasonic camera.
- Small size design
- Low power consumption. PCB-1 can be powered from the PTR-10 MARK II series device.



WM-11
Professional Wall Mount for Robotic
Pan Tilt Head

- Designed for Datavideo Robotic Pan Tilt Head including PTR-10 series
- Robust and durable setup
- With strong metal expansion bolts and three bubble level meters
- Can be mounted regularly or upside-down and support up to 50kg load



CM-10
Professional Ceiling Mount for
Robotic Pan Tilt Head

- Designed for Datavideo Robotic Pan Tilt Head including PTR-10 series
- Robust and durable setup
- Ceiling Mount with Long Tilt Arm included



HAND CARRY PORTABLE STUDIOS

The World's Most Compact Video Studio

4K
ULTRA HD



HS-4000

8 Input 4K Mobile Studio



HS-3200

12 Input HD Mobile Studio



HS-2200

6 Input HD/SD Mobile Studio



HS-1600T MARK II

4 Input HDBaseT Mobile Studio



HS-1300

6 Input HD Mobile Studio

- A complete professional broadcasting solution for switching, recording, streaming and monitoring
- Supports 8 channels UHD 4K60/50p inputs resolution
- 17" monitor with UHD 4K (3840 x 2160) LCD display
- 4K Streaming and backup recording via SD card
- Integrated 5" touchscreen display for easy operation
- 4 x Upstream keyers , 2 x DSK keyers and 2 x PIP

- A complete professional broadcasting solution for switching, recording, streaming and monitoring
- Supports 12 HD inputs in full 1080p resolution
- 4x upstream keyers, 2x DSK and 2x independent logos or dual chroma keyer
- Built-in animated stinger transitions and virtual set backgrounds

- Supports up to 6 HD inputs in a variety of configurations
- Built-in graphic overlay system for HDMI title input, software included
- Built-in 8 Channel Intercom/Talkback system for communication with camera crew

- Built-in HDBaseT technology allows you to run power, uncompressed video, camera control, and tally over a single CAT6 ("network") cable
- Built-in H.264 dual streaming encoder and recorder
- Built-in camera controller with a joystick and preset buttons

- A complete solution for switching, recording, streaming and monitoring
- 4 SDI and 2 HDMI inputs, 3 HDMI outputs
- H.264 recorder and streaming encoder for seamless online broadcasting



ICAST

Presentation Switchers

NDI®|HX



iCAST 10NDI
5-Channel All-in-one
Presentation Switcher

- Switching the PGM via front panel pushing buttons.
- Best partner with TPC-700/P Touch Panel Controller to get easy control by finger
- Support IP switcher to get the video source from worldwide
- Real-time recording and streaming status on 2" LCD
- 6 channel ISO recording (channel 1-5, PGM)
- Different bitrate settings for streaming and recording
- H.264 & H.265 encode
- External audio input for audio mix.
- Decode up to 3 NDI signals

4K
ULTRA HD



iCAST mini
4K Dual Channel Presentation
Switcher

- Support up to 4K30/29.97/25 video formats
- 7" Touch screen for easy operating and monitoring
- Capture camera position picture to be Image Key
- Remote controlling of camera options
- 2 HDMI 1.4 Video Input + 1 HDMI 1.4 PGM Output
- UVC output
- Ethernet RJ45 with integrated PoE
- Audio XLR (6.3mm) Combo Socket can be MIC input or Line audio input
- 1 x stereo RCA audio output
- Supports Audio Mixer and Audio delay
- Control by DVIP, RS-422 and RS-232



DIGITAL VIDEO SWITCHERS

4K
ULTRA HD



SHOWCAST 100
4K ShowCast Studio

- Support up to Ultra HD 4K/60 video formats
- Large 14" LCD Touch screen for operating and monitoring
- Support remote controlling of multiple camera options such as pan, tilt, zoom, iris, focus, shutter, and white balance
- The built-in H.264 encoder can instantly live streaming to any live broadcast platforms.
- Live-Streaming Vertical or Horizontal Video
- Built-in H.264 recorder for SD cards

4K
ULTRA HD



SE-4000
4K 8-Channel Digital Video Switcher

- Supports 8 channels UHD 4K60/50p input and output
- Scaling on each available input
- Integrated 5" touchscreen display to adjust all the setting without any laptop or app needed
- Support LumaKey, ChromaKey, Linear Key and Downstream Key
- 4 x Upstream keys , 2 x DSK keys and 2 x 3D borders PIP
- Professional Audio-to-Video Synchronization
- Support Still image thumbnails to capture important moments of your program



SE-3200
12 Input 1080p60 Switcher

- Supports 12 HD inputs in full 1080p resolution
- 4x upstream keys, 2x DSK and 2x independent logos or dual chroma keyer
- Built-in animated stinger transitions and virtual set backgrounds



datavideo

BE1200ML HD 6-CH DIGITAL VIDEO SWITCHER



POWER

DIGITAL VIDEO SWITCHERS



SE-1200MU
6 Input HD Switcher

- Supports 6 HD inputs
- 2x DSK and 2x PiP with dual chromakeyer
- Switch over IP, external control or RMC-260 control panel
- Built-in animated stinger transitions and virtual set backgrounds



RMC-260
SE-1200MU Remote
Controller

- A switcher style keyboard for controlling the SE-1200MU
- RS-232 interface for communication between RMC-260 and SE-1200MU



SE-650
4 Input HD Switcher
2 SDI and 2 HDMI Input

- 4 channel HD video switcher with audio mixer
- 1 SDI and 2 HDMI output channels
- Built-in animated stinger transitions and virtual set backgrounds



SE-500HD
4 Input 1080p60 Switcher 4 HDMI
Input

- 4 channel video switcher with scalable inputs and outputs
- Built-in video scaler for mixed resolution/standards inputs up to 1080p
- Support virtual video switching



DIGITAL VIDEO SWITCHERS ACCESSORIES



TPC-700
Touch Panel Controller

- Universal touch panel controller for:
 - iCAST 10NDI
 - HS/SE-3200
 - DVK-400
 - VGB-2000
 - VGB-4000



TPC-700P
Touch Panel Controller
with PoE

- Universal touch panel controller for:
 - iCAST 10NDI
 - HS/SE-3200
 - DVK-400
 - VGB-2000
 - VGB-4000



Control for OBV/MS/HS/SE-3200 Switcher:

- Store and recall memory presets, Chromakey, and flex source settings
- PIP window sizing and position
- Easily assign AUX outputs



Control for DVK-400 4K Chromakey:

- Support Aux Lumakey (Logo) on and off
- Provide Layer Swapping in front of the animation or behind the virtual objects, presenting the perspective effect like real.



Control for VGB-2000/4000 Professional presentation system:

- Provide presenter switch the scenes very easy
- Including full screen of PowerPoint contents, video or a virtual studio scene, add creativity and dynamics to her presentation(VGB-2000)
- Provide Layer Swapping in front of the animation or behind the virtual (VGB-4000)



Control for iCAST 10NDI 5-Channel All-in-one Streaming Switcher :

- Provide presenter switch the scenes very easy
- Store and recall memory presets
- PIP window sizing and position
- Recording and audio quick setting



MOBILE VIDEO STUDIOS

Video Production On The Road



MS-2850

8 to 12 Input Flyaway Studio

- Supports up to 12 HD or SD inputs in a variety of configurations
- Flyaway case design for portability (+/- 60kgs depending on configuration)
- Standard fitted with 8 channel intercom



SONY
PIONEERING

SONY
PIONEERING

REPLAY

PROGRESS REPLAY SYSTEM

data studio

REPLAY SYSTEM



RPL-100
Prores Replay System

- 2 channels instant replay system
- Simultaneous connect up to four cameras
- Easy-to-use touch screen interface
- Record and replay simultaneously
- Slow replay, play pause, reverse play
- Support SDI and HDMI interfaces
- Multiple input channel mixing selection
- Dual SATA drive slots, support hot plug while not recording



4K MULTICAMERA PROCESSORS



KMU-300
4K Multi-Channel ROI
Streaming Switcher

- 2-in-1 switching modes for 16x9 or vertical video production
- Size and switch regions of interest from display
- Easily switching between cutouts by touch display
- 16:9 and 9:16 video streaming via built-in encoder
- H.264 recording built-in
- Cutouts selection by a joystick
- Four channel audio mixer and audio embedding



KMU-100
2 Input 4K Virtual Multicamera
Processor

- Generates up to eight cutouts out of one or two 4K inputs
- 12G-SDI, Quad 3G-SDI or HDMI 2.0 inputs
- 8 channel switcher to switch between cutouts
- Create speed sensitive motion paths
- Control through RMC-185 hardware controller
- Optional PC control software



RMC-185
KMU-100 Remote Controller

- Provides easy and intuitive control of the KMU-100
- Easily pan, tilt and zoom using the joystick to create the user defined windows on the 4K signal



STREAMING PLATFORM



dvCloud
dvCloud Live Streaming Platform

- Stream up to 5 Live sources to 25 platforms simultaneously
- Easily send SDI or HDMI over the internet with Datavideo NVS encoders and NVD decoders
- Automatically record to the cloud
- Supports the SRT (Secure Reliable Transport) protocol for low latency, reliable streaming
- Monitor all inputs and outputs from a single statistics view



BB-1 Kit
dvCloud Remote Device Control

- Control various IP controllable device over the internet including Datavideo PTZ cameras, and switchers
- Enables numerous remote production workflows
- Each pair of BB-1 enables the control of five devices at each site
- A single dvCloud Professional subscription supports six BB-1s
- Firewall friendly, no IP knowledge required
- Supports low latency, reliable streaming via SRT



ENCODERS



iabm
DESIGN & INNOVATION
AWARDS - 2017
FINALIST



NVS-40
4 Channel Streaming
Encoder/ Recorder

NVS-36
4K Dual Streaming Encoder

- Quad input encoder (4 x HDMI, Channel 1 SDI/HDMI selectable)
- External audio inputs
- Supports Quad View, Full Screen, PiP, PBP, POP mode
- Streaming videos in RTMP(S), RTSP, SRT and TS formats
- Dual quality encoding per input up to 30 Mbps
- SSD drive recording
- H.264/H.265 streaming and recording simultaneously.
- File System: FAT32/exFAT, for continuous recording without file size limitation.
- Selectable audio output: embedded audio/external audio/mixed audio
- Streaming videos in RTMP(S), RTSP, SRT and TS formats
- LED indicator showing the status or the detections.
- Dual streams to CDNs

ENCODERS



NVS-35

Dual Stream H.264 Video Encoder

- 1x SDI / HDMI input
- Support dual streaming to different platforms.
- Support vertical streaming.
- Streaming videos in RTMP(S), RTSP, SRT and TS formats
- Record on SD card, easy to store
- XLR and RCA audio inputs are provided.
- Supports FAT32/exFAT/NTFS file system for continuously recording



NVS-33

H.264 Video Encoder SDI/HDMI

- 1x SDI / HDMI input
- Supports different bitrates for recording and streaming simultaneously
- Streaming videos in RTMP(S), RTSP, SRT and TS formats
- Record on SD card, easy to store
- Supports FAT/exFAT/NTFS file system



NVD-40

4K HDMI IP Video Decoder

- Decodes video from Datavideo encoders, Youtube and Vimeo
- STB functionality for use as a set-top-box
- Decodes all common streaming protocols including SRT
- Output video up to 3840x2160p 50/60
- Support Unicast and Multicast
- Seamless integration with Datavideo dvCloud streaming platform

DECODERS



NVD-35 MARK II

SDI IP Video Decoder

- Decodes video from Datavideo encoders, Youtube and Vimeo
- STB functionality for use as a set-top-box
- Decodes all common streaming protocols including SRT
- Seamless integration with Datavideo dvCloud streaming platform



NVD-30 MARK II

HDMI IP Video Decoder

- Decodes video from Datavideo encoders, Youtube and Vimeo
- STB functionality for use as a set-top-box
- Decodes all common streaming protocols including SRT
- Seamless integration with Datavideo dvCloud streaming platform



RECORDERS

Capture Your Creativity



HDR-90
ProRes 4K Dual Disk Recorder
1U Rackmountable

- Large 5" LCD Touch screen for operating and monitoring
- Support ISO recording of four HD videos and playback
- 12G/3G/HD-SDI and 4K/HD-HDMI input, output with embedded audio
- A recorder that can be operated like a 4-channel video switcher
- Records on two 2.5" SSDs
- Supports close caption



HDR-80
ProRes 4K Dual Disk Recorder
Desktop

- Large 5" LCD Touch screen for operating and monitoring
- Support ISO recording of four HD videos and playback
- 12G/3G/HD-SDI and 4K/HD-HDMI input, output with embedded audio
- A recorder that can be operated like a 4-channel video switcher
- Records on two 2.5" SSDs
- Supports close caption



HDR-2
4K H.265 Recorder

- Supports up to 4K 50/60 resolution recording to SD card
- HDMI 2.0 input, output and loop-through output
- 2"LCD for menu setup and monitoring
- Support H.265/H.264 recording
- XLR audio input x2 and RCA input x 2
- Redundant Power recorder (UPS)
- Supports DVIP, RS-422/RS-232 and GPI remote control



RP-79
HDR-80 Rack Tray

- Special designed to accommodate two HDR-80 recorders
- Providing dual machine operation in OB Vans or studios.



MONITORS

Broadcast Quality LCD Monitors



TLM-170K/KM/KR
17" ScopeView Production Monitor

- DCI 4K/60p and UHD 4K/60p signals on input and output
- 17" monitor with UHD 4K (3840 x 2160) LCD display
- Support column (YRGB peak), time code, waveform, vector scope & audio level meter, peaking focus assist, zoom, pix to pix, underscan, check field, etc
- 12G-SDI video input with loop-through output
- HDMI 4K input with loop-through output
- DSLR Scaling for Full Screen Viewing
- Time Code Display (LTC/VITC)



TLM-170F/FM/FR
17" ScopeView Production Monitor

- DCI 4K/60p and UHD 4K/60p signals on input and output
- 17" monitor with FHD (1920 x 1080) LCD display
- Support column (YRGB peak), time code, waveform, vector scope & audio level meter, peaking focus assist, zoom, pix to pix, underscan, check field, etc
- 12G-SDI video input with loop-through output
- HDMI 4K input with loop-through output
- DSLR Scaling for Full Screen Viewing



TLM-170V/VM/VR
17" ScopeView Monitor

- 17" Full HD 1920x1080 panel resolution
- 1 x 3G/HD/SD-SDI 2 x HDMI Inputs
- Support column (YRGB peak), waveform, vector scope & audio level meter, peaking, zoom
- SDI, HDMI cross conversion



TLM-700UHD
7" 4K Monitor

- 1920x1200 panel resolution
- UHD 50/60P HDMI input and loop out power available by batteries
- Support focus assist, false color, histogram, exposure, zoom, pixel to pixel, under-scan, check field
- Can be powered by batteries



TLM-102
Dual 10" Monitor

- 1280x800 panel resolution
- 1 x 3G/HD/SD-SDI, 1 x HDMI inputs and loop outs
- SDI, HDMI cross conversion

AV CONVERTERS

Signal To Signal Perfection



DAC-70
Up Down Cross

- Convert video signals from VGA, HDMI, SDI with Audio input to 3G/HD/SD SDI and HDMI outputs
- 3G-SDI technology with full 10 bit processing and low SDI jitter
- RCA audio embedding



DAC-60
SDI to VGA

- Supports 3G/HD/SD-SDI to VGA conversion
- SDI loop through is unaffected by the adjustments to the VGA signal



DAC-50S
HD-SDI to Analogue

- Converts 3G/HD- SD SDI input to analogue video and 2 unbalance analogue audio channels
- Two available output combinations:
 - 1 x YUV output & 1 x CV output
 - 1 x S-Video (Y/ C) output & 2 x CV outputs



DAC-45
4K Up Down Cross

- Supports VGA/HDMI/SDI to 4K HDMI/3G-SDI multi-format up/down/cross conversion
- Built-in De-interlacer and Interlacer (I/P conversion)



AV CONVERTERS

Signal To Signal Perfection



DAC-9P 4K
4K HDMI to SDI

- Supports up to DCI 4K (4096 x 2160) and UHD 4K (3840 x 2160)
- Supports 2x 12G-SDI output
- HDMI 2.0 input and loop-thru output
- Supports Re-Clocking
- Provides additional 2-Channel RCA analog audio embedded



DAC-9P
HDMI to SDI

- Supports HDMI to 3G/HD/SD-SDI conversion
- Audio can be embedded within SDI output signal
- Supports YUV and RGB color space



DAC-8P 4K
4K SDI to HDMI

- Supports up to DCI 4K (4096 x 2160) and UHD 4K (3840 x 2160)
- 12G-SDI input and loop-thru output
- Supports HDMI 2.0 to 18 Gbps Video bandwidth
- Supports Re-Clocking
- Provides Additional 2-Channel RCA Analog Audio Output



DAC-8PA
SDI to HDMI

- Supports 3G/HD/ SD-SDI to HDMI conversion
- Loop through SDI output with embedded audio
- Supports YUV and RGB color space

CONVERTER ACCESSORIES



RMK-2

2U Rackmount Kit for DAC

- Rackmount Frame to hold up to 8 DAC Converters
- Built-in power distributor for up to 8 converters

DISTRIBUTION AMPLIFIERS

4K
ULTRA HD



VP-840
1x4 4K HDMI Splitter

- 1 x HDMI input and 4x HDMI outputs
- Supports 4K2K@60 4:4:4 8bits
- Supports High Dynamic Range, which is 4K2K@60 4:2:0 10bits
- HDMI 2.0a compliant, HDCP 2.2 and 1.4 compliant
- Supports Dolby Digital, DTS-HD and Dolby TrueHD audio



VP-597
2x6 3G-SDI Splitter

- 2 x 3G/HQ/SD-SDI inputs
- 6 x 3G/HQ/SD-SDI distribution outputs
- Supports embedded audio SDI
- Two input video can be controlled by A/B switch or GPI remote

12G



VP-901
SDI Distribution Amplifier

- 1 x SDI input, 8x SDI outputs
- Supports up to 3840x2160p
- Signal auto detection and re-clocking
- Useful applications in digital signage, indoor, and outdoor studios
- LED indication of signal lock and video rate

UVC INTERFACE



CAP-1
SDI to USB 3.0 Capture Box



CAP-2
HDMI to USB 3.0 Capture Box

- 1080p60 video transmission over USB 3.0
- 1 x SDI video input
- 3G-SDI audio and video capture
- Connect to video conferencing
- Plug and play operations with video format (resolution and frame rate) auto-detection capability

- 1080p60 video transmission over USB 3.0
- 1 x HDMI video input
- HDMI 1.4 audio and video capture
- H.264 video recording format (software compression)
- Plug and play operations with video format (resolution and frame rate) auto-detection capability
- Connect to video conferencing

REPEATERS

4K
ULTRAHD



VP-929
4K HDMI Repeater

- Easily extend up to 4K HDMI signal to another 10m in up to 4K resolution and up to 15 meters in HD resolution.
- Powered by HDMI signal or external USB power supply
- Secure HDMI cables with regular zip ties
- Cost effective way of extending HDMI signals



VP-737
Composite Signal Repeater

- Wired composite video transmission as far as 200 meters
- Completely adaptive - quick, easy installation and setup, no configuration required
- Cat5e extension design make use of existing Cat5e or better wiring infrastructure



VP-634
100m SDI Repeater
(Unpowered)

- Supports 3G/HD/SD-SDI
- Each extended SDI signal up to 200m, allowing runs of up to 1000m
- Requires VP-633 in chain to supply power



VP-633
100m SDI Repeater
(Powered)

- Supports 3G/HD/SD-SDI
- Each extended SDI signal up to 200m, allowing runs of up to 1000m



INTERCOM



ITC-300
Digital IP intercom system

- 1U Rackmountable 8 channels Intercom System
- Transmits two ways talk, and tally over single CAT cable
- Communication distance up to 100 meters
- Selectable channel talk, broadcast to all or mute
- Bi-colour tally light indicator



ITC-100
Intercom System

- 1U Rackmountable 8 channels Intercom System
- Communication distance up to 200 meters
- Selectable channel talk, broadcast to all or mute

INTERCOM ACCESSORIES

ITC-300 only



ITC-300SL
Digital Intercom Belt Pack



VP-300R
Intercom Repeater



CB-68
70m 2-in-1 Cable

ITC-100 only



ITC-100SL
Belt Pack



TB-5
Tally Box Converter



CB-3
20m 5-Pin Intercom
Cable



CB-4
50m 5-Pin Intercom
Cable

ITC-100/ 300 sharable



TD-3
Tally Light



HP-1
Single-Side Headset



HP-2
Dual-Side Headset



HP-2A
Dual-Side Headset
with 3.5mm Jack



VIRTUAL STUDIO SYSTEMS



TVS-3000
4K AR 3D
Tracking & Trackless

- 3D tracking through camera crane, complete true 3D virtual studio production
- 2 channels 4K 25/30P
- Standard 4 channels HD optional expandability to 8 channels production
- Supports NDI technology
- Multi-channel streaming and decoding
- Professional graphic layout function
- Built-in software audio mixer



TVS-2000A
3D 2 Input 3G-SDI
Tracking & Trackless

- Supports Tracking and Trackless Virtual Studio simultaneously
- Supports DataVideo PTZ camera as a tracking camera
- Supports 2x SDI and 1x HDMI video input/output
- 100 free virtual sets included



TVS-1000A
2D 1 Input HDMI
Trackless

- Trackless Virtual Technology
- Provides real simulation virtual studio with single button.
- Supports 1x HDMI camera input and 1x HDMI aux input
- Supports 2x HDMI output
- Five in One System: Virtual Studio, Switcher, Character Generator, Recorder and Web Streaming
- 200 free virtual sets included



CHROMAKEYER



DVK-400
4K Chromakey

- Real-time chromakeyer with 4:4:4 10-bit internal process
- Advanced algorithm can present transparency, smoke, reflection and shadow in detail
- Easy spill suppression with color enhancement
- Program and Preview with mirror option
- Supports up to 4K by free firmware upgrade in the future
- Background supports 1x HDMI

CHROMAKEYER ACCESSORIES



MAT-2
Green Color Plastic Mat
1.8M x 27M
Floor Use



MAT-5
Green Color Plastic Mat
1.8M x 54M
Wall use



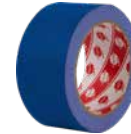
MAT-7
Blue Color Plastic Mat
1.8M x 54M
Wall use



TA-1
Green Color Tape
48mm x 25M



TA-2
Green Color Tape
96mm x 25M



TA-3
Blue Color Tape
48mm x 18.3M



AUDIO MIXING AND MANAGEMENT



DAC-80
2 Channel Audio Isolation
Transformer

- Very low distortion and close to zero attenuation
- Eliminate audio noise caused by ground loops
- No Power needed



DAC-90
SDI Audio De-embedder

- De-Embed Audio from SDI Signal
- Auto detects video format, support up to 1080P 50/60
- Assignable De-embedded audio signal
- Audio level indicator display



DAC-91
SDI Audio Embedder

- Auto detects SD and HD signals
- Auto sets compatible formats to embed external sound sources to SDI output
- 4 x Analogue Audio inputs (Mini XLR x 2, RCA x 2)



AD-10
Audio Delay Box

- Audio & video synchronization
- Delay up to 400 ms
- Power by external USB power supply
- Audio level control to make up or add gain
- Switchable for microphone input or audio line input
- Switchable condenser / dynamic microphone
- Stereo RCA output connectors for wide compatibility
- Simple controls and LED indicators
- Compact and lightweight design

AUDIO MIXING AND MANAGEMENT



AD-200
Audio Delay Box
with Level Adjustment

- Two in one: Audio Mixer and delay
- Support up to 3 sec audio delay adjustment for each input channel
- 6-CH Audio mixer and matrix router to 4-CH audio outputs



AD-300
Audio Delay Box

- 5 Channel audio mixer and matrix router to 2 channel audio outputs
- Support up to 3sec audio delay adjustment for each input channel
- Built-in balanced or unbalanced audio conversion
- Audio Processors: Compressors, Limiters, Gate, Expander, Filter and Equalizer
- Audio level adjustment of each input
- Audio gain control



AM-100
Audio Mixer

- Audio level indicator display
- Supports A+V function, the audio can be switched simultaneously with the video
- Supports XLR microphone input and +48V phantom power



TELEPROMPTERS



TP-900
Presentation Prompter
for PTZ Camera

- Designed Specifically for PTZ Cameras
- Unique and innovative design, suitable for any PTZ camera
- Built in Teleprompter application
- Easy control and monitoring via Ethernet
- Synchronize multiple units via HDMI or IP
- Powerful rich text editor and Real Time Editing
- P2P Interview Configuration



TP-800
Portable Conference
Teleprompter

- Built into a ruggedized carry case
- Completely freestanding and standalone
- dv prompter Plus software built in
- Can be powered by the mains or a V-Lock battery
- HDMI input and output can be used to connect multiple TP-800s together
- HDMI output can be used to drive external displays
- Can be monitored and controlled via IP



TP-700
Presentation Prompter
for ENG Camera

- 15" LCD screen with dvPrompter Plus software built in
- Mount cameras up to ENG size to the rear rail or use freestanding in front of any camera
- Can be mounted to any tripod or light stand in freestanding configuration
- Supports up to 19" talent monitors via VESA 75 and 100 mount
- Supports mains and V-Lock battery power



TP-650
Large Screen Prompter Kit
for ENG Cameras

- Easy to use tablet teleprompter
- iOS and Android app available
- Suitable for tablets up to 15.6"



TELEPROMPTERS



TP-500
DSLR Prompter

- Easy to use tablet teleprompter
- iOS and Android app available
- Suitable for tablets up to 11.6"



TP-300
Tablet Prompter

- Easy to use tablet teleprompter
- iOS and Android app available
- Suitable for tablets up to 11.6"



TTL-100
Through the Lens Kit

- Turns the TLM-700K / TLM-700UHD into a "through the lens" monitor
- Allows the talent to see themselves while looking directly into the centre of the camera lens
- Used with web conferencing software for remote interviews, allows you to see your guest while looking directly into the centre of the camera lens
- Can be mounted to all tripods and light stands
- Features a 1/4 mounting rail for box cameras and web cameras, can also be used freestanding



FS-30
Foot Switch

- Compatible with the Datavideo TP-800 Teleprompters
- Connects via USB and offers three pedals with independent functions
- Supports control of both scrolling text and slides.
- Non-contact photoelectric sensors for near silent operation



WR-500
Bluetooth Teleprompter
Remote Control

- Bluetooth wireless remote for teleprompters
- Compatible with Apple and Android tablets



HARD CASES



HC-600
Hard Case for TP-600/650
Teleprompter Kit



HC-700
Water, Dust and Crush Resistant
Case - Trolley Style (XL)



HC-800
Water, Dust and Crush Resistant
Case - Trolley Style (XXL)



HC-800FS
Water, Dust and Crush Resistant
Case with foam compatible with
PTC-280, PTC-140T and PTC-150TL
- Trolley Style (XXL)

LIVE

BREAKING

NEWS



BREAKING NEWS

TURTLES SPOTTED IN NEW YORK

Four Human Size Turtles spotted eating pizza!

LIVE



18:02 CET

CHARACTER GENERATORS

Slap A Title On It



TC-200

SDI Title Creator

- Portable title creator
- Compatible with CG-200, CG-300, and CG-500
- Supports downstream and upstream (key and fill) keys
- Supports HDMI, HD/SD-SDI connections



POWER DISTRIBUTION



PD-6A
Camera Power Center

- Automatically adjusts to work with 50Hz or 60Hz supplies between 100-240 VAC
- 8 DC outputs with a combined total power consumption of 480W
- Provide both DC & AC overload protection



PD-4A
Redundant Power Center

- Two AC power supplies,
- Supply energy even if one power source fails
- Output : 3 x 5A + 2 x 10A 12V XLR DC Female
- Built-in time delay power-on control to initiate each DC output terminal



PD-2A
Power Center

- Combine up-to 10 power supplies into a single power connection
- Output connections: 4 x 3A + 2 x 5A + 2 x 10A 12V XLR DC



DDC-4012H
DC to DC 12/7.2V 4.0A Converter

- Automatically accepts input voltages between 15 and 50V DC to provide regulated 7.2/8.4/ 12V DC output depending on its output switch setting
- Max power output 48W / 4A
- Options for either 4pin XLR or 5.5mm PSU type output connections



РЕГИСТРАЦИЯ ОТКРЫТА
REGISTRATION IS OPENED

МЕЖДУНАРОДНАЯ КОНФЕРЕНЦИЯ
ПРИЧЕРНОМОРСКОЕ ЗЕРНО И МАСЛИЧНЫЕ
2012/13

XVIII МЕЖДУНАРОДНАЯ КОНФЕРЕНЦИЯ
ПРИЧЕРНОМОРСКОЕ ЗЕРНО И МАСЛИЧНЫЕ
2012/13

ПРИЧЕРНОМОРСКОЕ
ЗЕРНО И МАСЛИЧНЫЕ
2012/13

Агрпромышленное страхование

ALL IN ONE CABLES



CB-22H
HD/SD 30m 4-in-1 Cable
(HD-SDI/ITC/CV/DC Power)



CB-23H
HD/SD 50m 4-in-1 Cable
(HD-SDI/ITC/CV/DC Power)



CB-24
SD 100m 3-in-1 Cable
(SDI/ITC/CVBS)



CB-30
HD/SD 30m 4-in-1 Cable for Multi-
Camera Control
(HD-SDI/ITC/CV/Cat-5)



CB-31
HD/SD 50m 4-in-1 Cable
for Multi-Camera Control
(HD-SDI/ITC/CV/Cat-5)



CB-46
HD/SD 30m 2-in-1 Cable
(HD-SDI/ITC)



CB-47
HD/SD 50m 2-in-1 Cable
(HD-SDI/ITC)



CB-61
HDMI Active Optical Cable - 50m



CB-62
HDMI Active Optical Cable - 100m

NOTE

NOTE

datavideo

www.datavideo.com



@DatavideoUSA
@DatavideoEMEA
@DatavideoTaiwan
@DatavideoAsia
@DatavideoIndia2016
@Datavideojapan
@DatavideoAustralia



@Datavideo
@Datavideo_EMEA
@Datavideo_Taiwan
@datavideoasia
@datavideo_malaysia
@datavideoindia



@DatavideoUSA
@DVTWDVCN



@DatavideoUSA
@DatavideoEurope

Disclaimers of Product and Services

This brochure is intended as a guide only. We reserve the right to change specifications and availability without prior notice. While we strive for complete accuracy, be aware that it may contain errors and omissions. Prior to purchase, please check with your local Datavideo office or authorised distributor.